



Shifting the Child Protection Paradigm

*Zeinab Chahine,
Managing Director
Strategic Consulting
Casey Family Programs*



THE EVOLUTION OF HOPE
Charting a path into **the next 50 years**

safe children | strong families | supportive communities

annual all-staff meeting | january 2017 | washington state convention center

Paradigm: A theory or a group of ideas about how something should be done, made, or thought about...





THE EVOLUTION OF HOPE

Charting a path into the next 50 years

safe children | strong families | supportive communities

19th and 20th Century Child Protection: Theoretical orientation and Historical Tensions

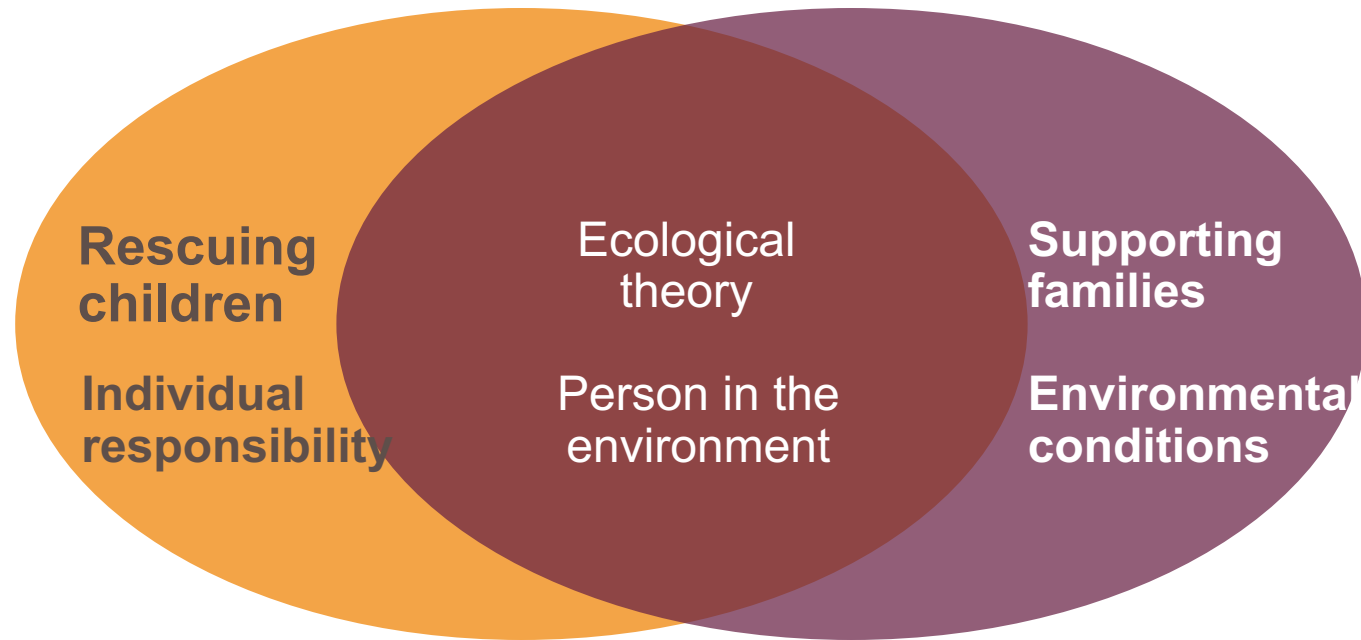
19th Century ideology and view of poor families

- Poor laws - “worthy and unworthy poor”
- Attitudes about race, ethnicity, new immigrants...

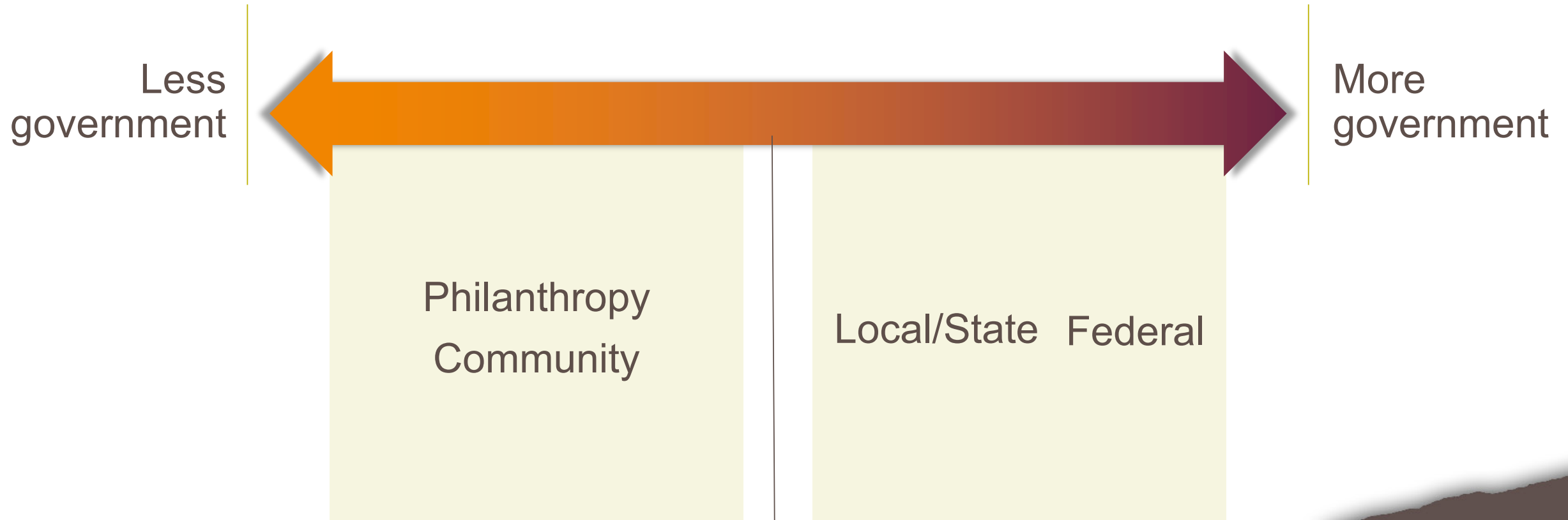
Historical tensions and theoretical orientation



Historical tensions: theoretical orientation



Historical tensions: the role of government

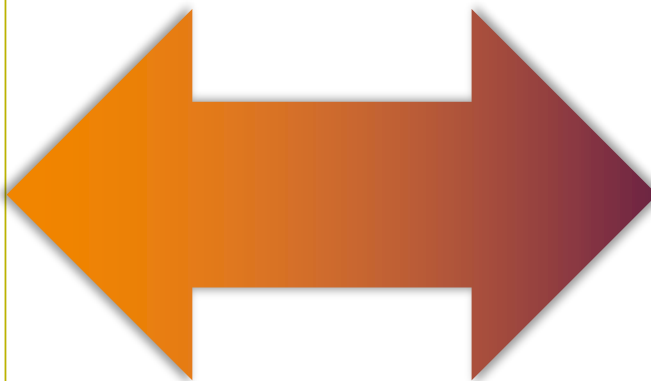


When and how we intervene?

FEDERAL | STATE POLICIES | FUNDING STRUCTURE

Individual responsibility

- After maltreatment occurs- Investigation (findings)/out of home care.
- Categorical
- Individual
- Problem/deficit oriented



Environmental conditions

- Before maltreatment occurs
- Intervene with at risk population using data and evidence
- Universal
- Population level
- Build protective capacity/strength-based



THE EVOLUTION OF HOPE

Charting a path into the next 50 years

safe children | strong families | supportive communities

The Evolution of Child Rescue

Evolution of child rescue: almshouses to orphanages

- In 1824 report by New York Secretary of State Robert Yates heralded placement in almshouses as the most effective approach for meeting the needs of the poor.
- By 1840s many states began to recognize that conditions within almshouses were not acceptable for housing children. Orphanages came into existence as an alternative to house poor children who could not be maintained adequately by their parents.

Evolution of child rescue: From orphanages to orphan trains



Who were the “orphans”? Native American/American Indian, Immigrant, Poor...

Evolution of child rescue: societies for the prevention of cruelty to children and social work profession

- The story of Mary Ellen- NYC
- 1874 New York Society for the Prevention of Cruelty to Children was formed
- By 1929, there were 300 non-governmental child protection societies in the country

Emergence of the Social work profession:

❑ Charity Organization movement

(scientific charity)

❑ Settlement House movement



THE EVOLUTION OF HOPE

Charting a path into the next 50 years

safe children | strong families | supportive communities

Birth of the Modern Child Protection System

Federal role expansion and the “New Deal”

- White House Conference on Children -1909
- Mother’s/Widow’s Pension – controversial but palatable when the mother was “morally upright” and white
- **Social Security Act of 1935**

1960's: Civil rights movement, the Great Society, and War on Poverty

- Civil Rights Movement and War on Poverty
- Louisiana expelled 23,000 children from its welfare rolls
- Flemming Rule: HEW Secretary Flemming, 1961
“unsuitable home” becomes “unfit parent”

Child Abuse /Battered Child Syndrome

1962: Dr. C. Henry Kempe “*Child Abuse Syndrome*” or “*Battered Child Syndrome*”

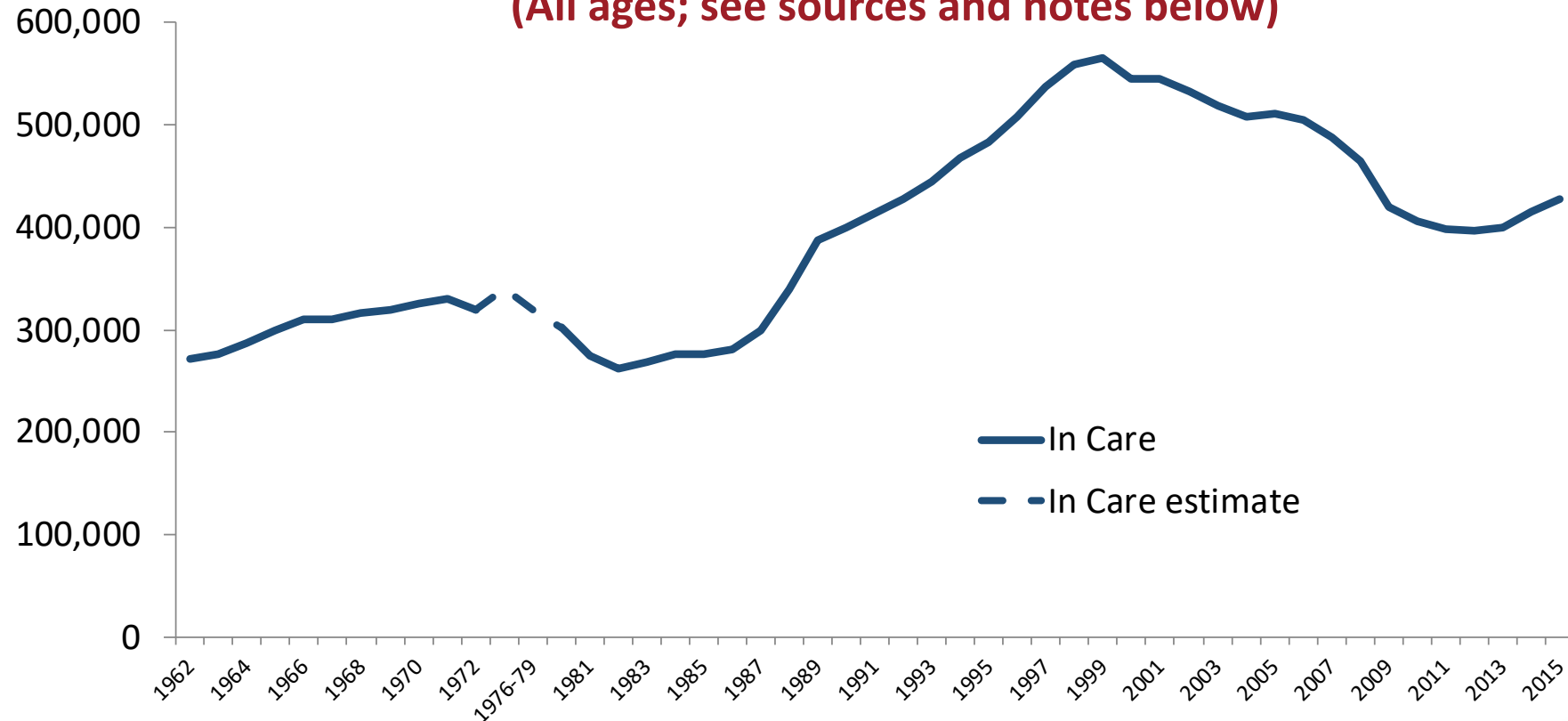
- Developments in medical technology allowed radiologists to see evidence of subdural hematomas and abnormal fractures caused by beatings.
- By 1966, every state had passed legislation requiring better reporting and intervention in cases of child abuse

Child Abuse Prevention and Treatment Act [CAPTA] (1974):



Trends by the decade | # of children in out-of-home Care: 1962-2014

(All ages; see sources and notes below)



Sources: Use caution when interpreting the trendline as various sources were used. Data from Children's Bureau and National Center for Social Statistics, Social and Rehabilitation Services (FY1962-72), Children and Youth Referral Survey: Public Welfare and Social Service Agencies (FY1980-81), American Public Human Services Association (FY1982-1996), HHS (FY1997-2013). Data from 1973-1979 missing and estimate developed using narrative description of trend in 1993 Green Book.

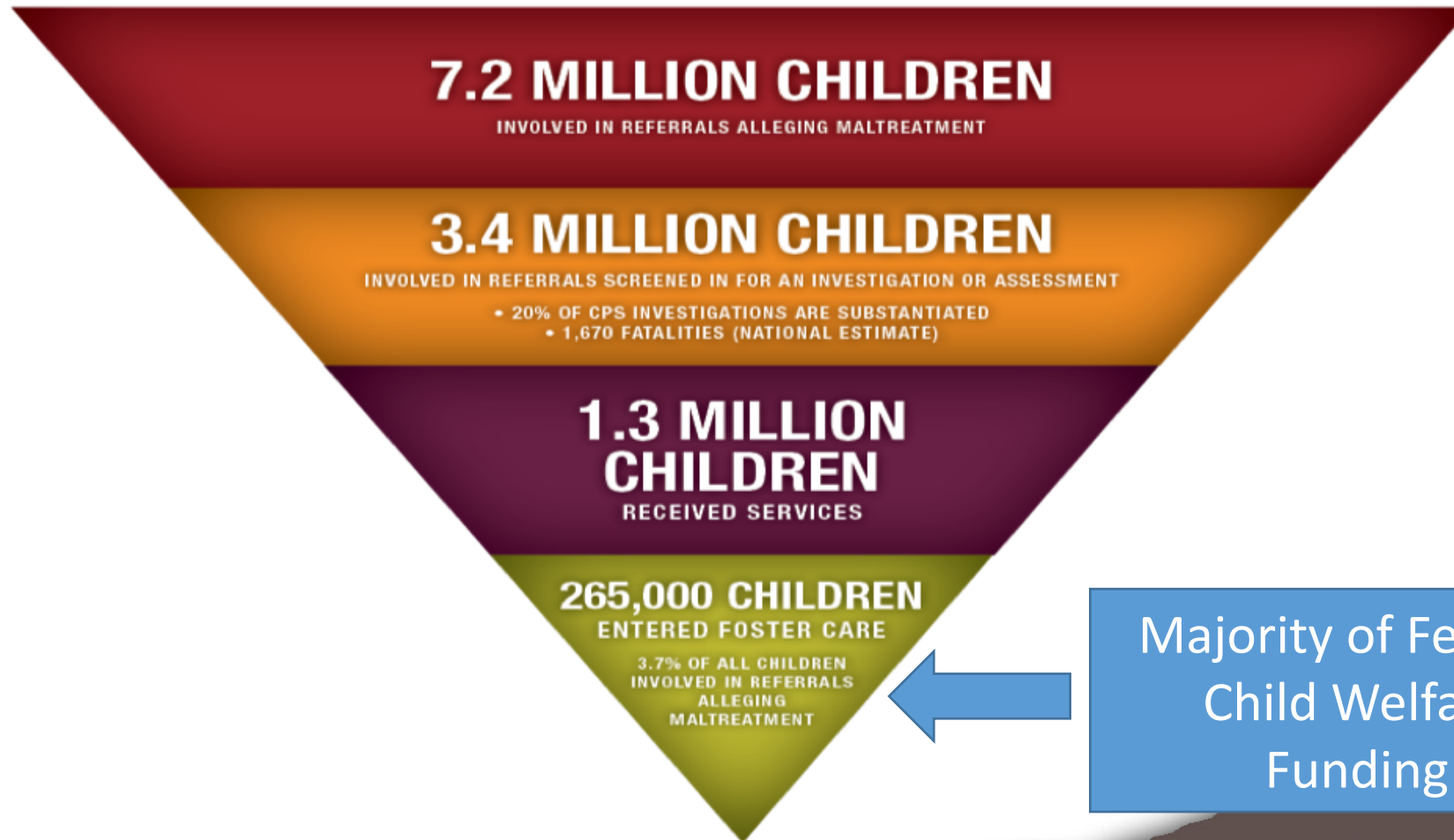
annual all-Data compiled by Data Advocacy 1.23.2015



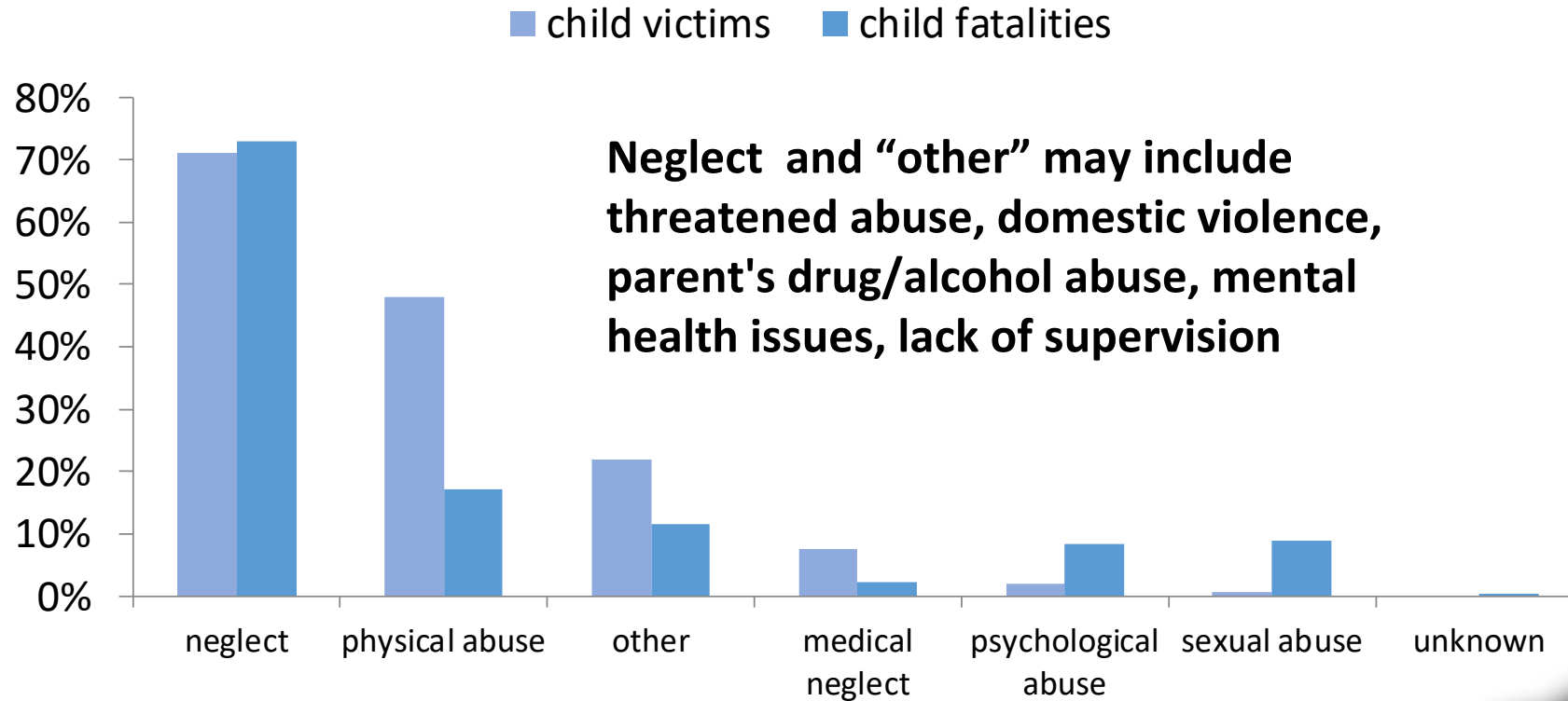
THE EVOLUTION OF HOPE
Charting a path into the next 50 years

safe children | strong families | supportive communities

Child Maltreatment Report 2015



Neglect as a primary maltreatment type



Public awareness & expectations: Media headlines

- The Oregonian | Oregon (Jan 9, 2018)
[Oregon's child welfare agency is headed to trial over 2-year-old's death](#). A lawsuit seeking millions in damages for the death of a 2-year-old who died in the care of his stepfather.
- Indianapolis Star | Indiana (Jan 12, 2018)
[2-month-old dies of malnutrition hours after DCS, other welfare workers visited her home](#)
- Independent Record | Montana (Jan 17, 2018)
[12 children involved in child protective services died over the last year](#)

Public awareness & expectations: Media headlines

- New York Post | New York (Jan, 11, 2018)
Victims blame child welfare agency for deadly Bronx blaze
The mother of the 3-year-old blamed for **last month's Bronx blaze that killed 13 people** was “known to” authorities and child-welfare workers for not watching the boy —
- The claimants contend that had said Administration for Child Services Department and/or other City agencies followed up on **complaints and taken the child away from the mother, as they should have,** said fire would not have occurred,” the court papers say.

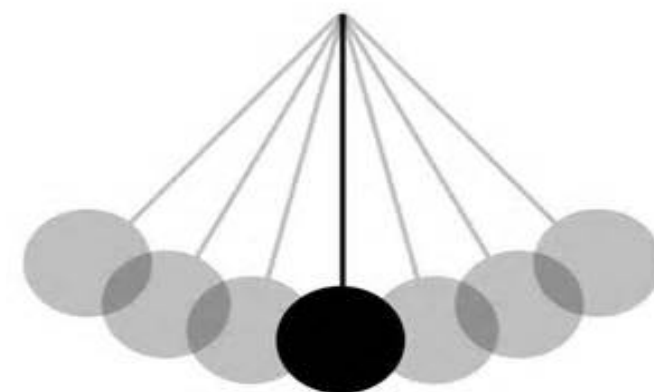
Response to critical incidents

Child
deaths/critical
incidents

Media & public
outrage

Blame agency/staff
for failing to remove
the child

Heightened concern
for child safety- risk
intolerance



Pendulum Swing



THE EVOLUTION OF HOPE

Charting a path into the next 50 years

safe children | strong families | supportive communities

Paradigm Shift: Application of Safety Science in Child Protection

Safety science/Safety culture

Aviation, health care, nuclear energy and others have learned that in order to improve public safety, it is important to:

- Avoid blame: view human error in the context of systems
- Focus on creating high reliability organizations
- Create a safe environment for staff to report and learn from error
- Proactively address system issues
- Use data analytics to predict potential concerns (conduct directed studies, assessment of safety enhancements, known risk monitoring, and vulnerability discovery)



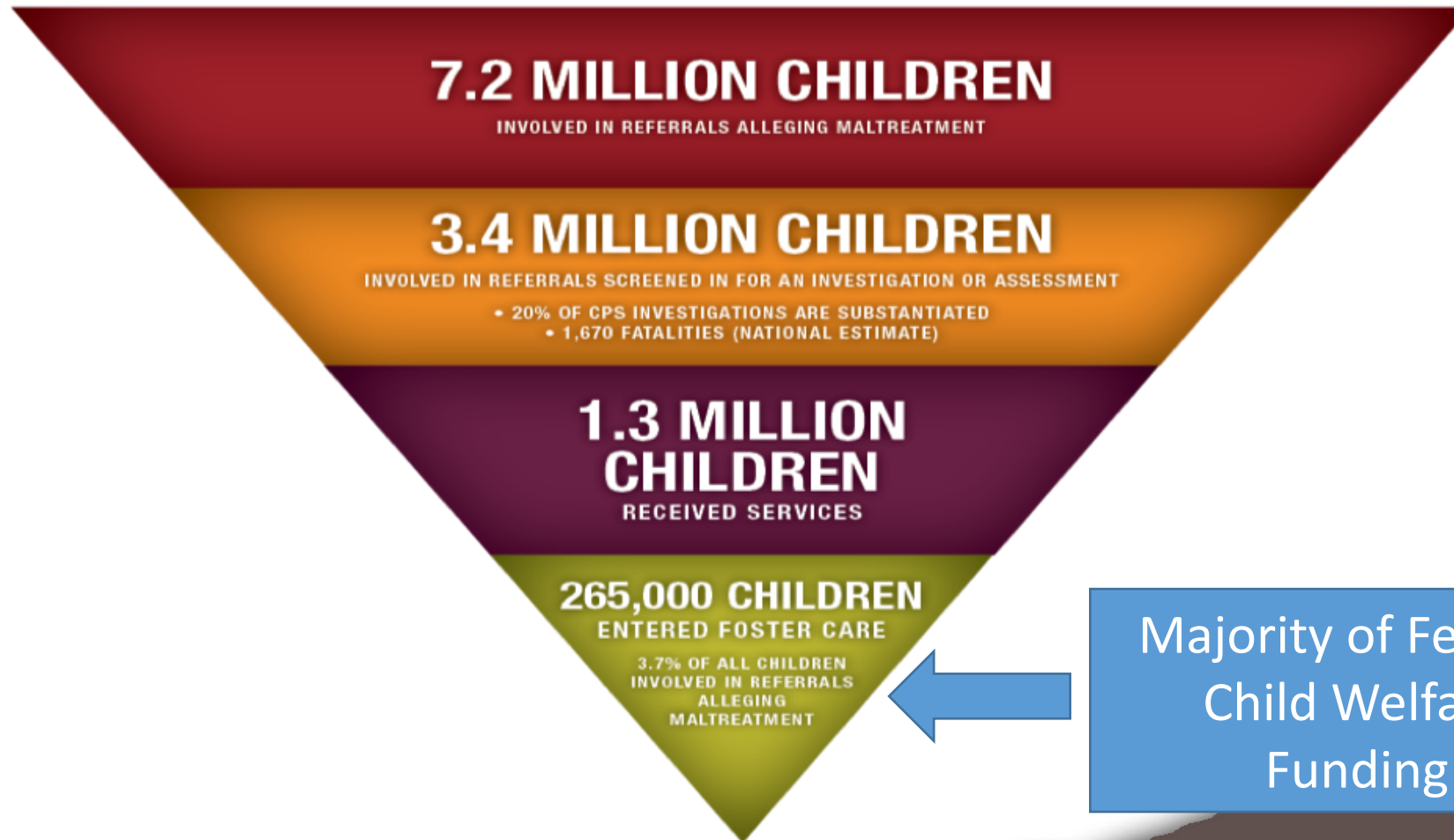
THE EVOLUTION OF HOPE

Charting a path into the next 50 years

safe children | strong families | supportive communities

Paradigm Shift : A Public Health Approach in Child Welfare

Child Maltreatment Report 2015



Commission to Eliminate Child Abuse and Neglect Fatalities

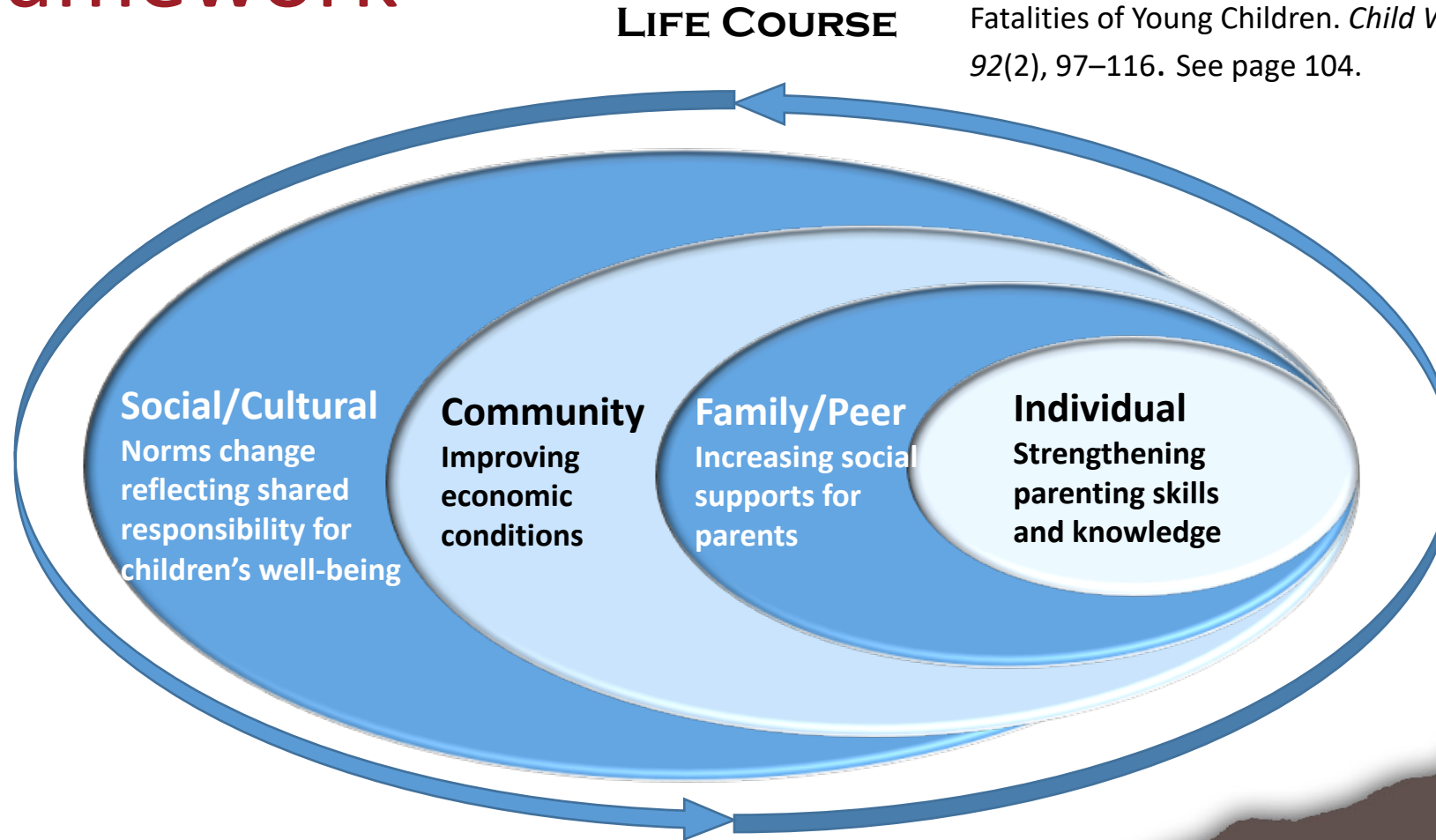
“Saving Lives today while laying the foundation for a **21st Century Child Welfare System**”

“Core Components of the 21st Child Welfare System Require a **public health approach**”

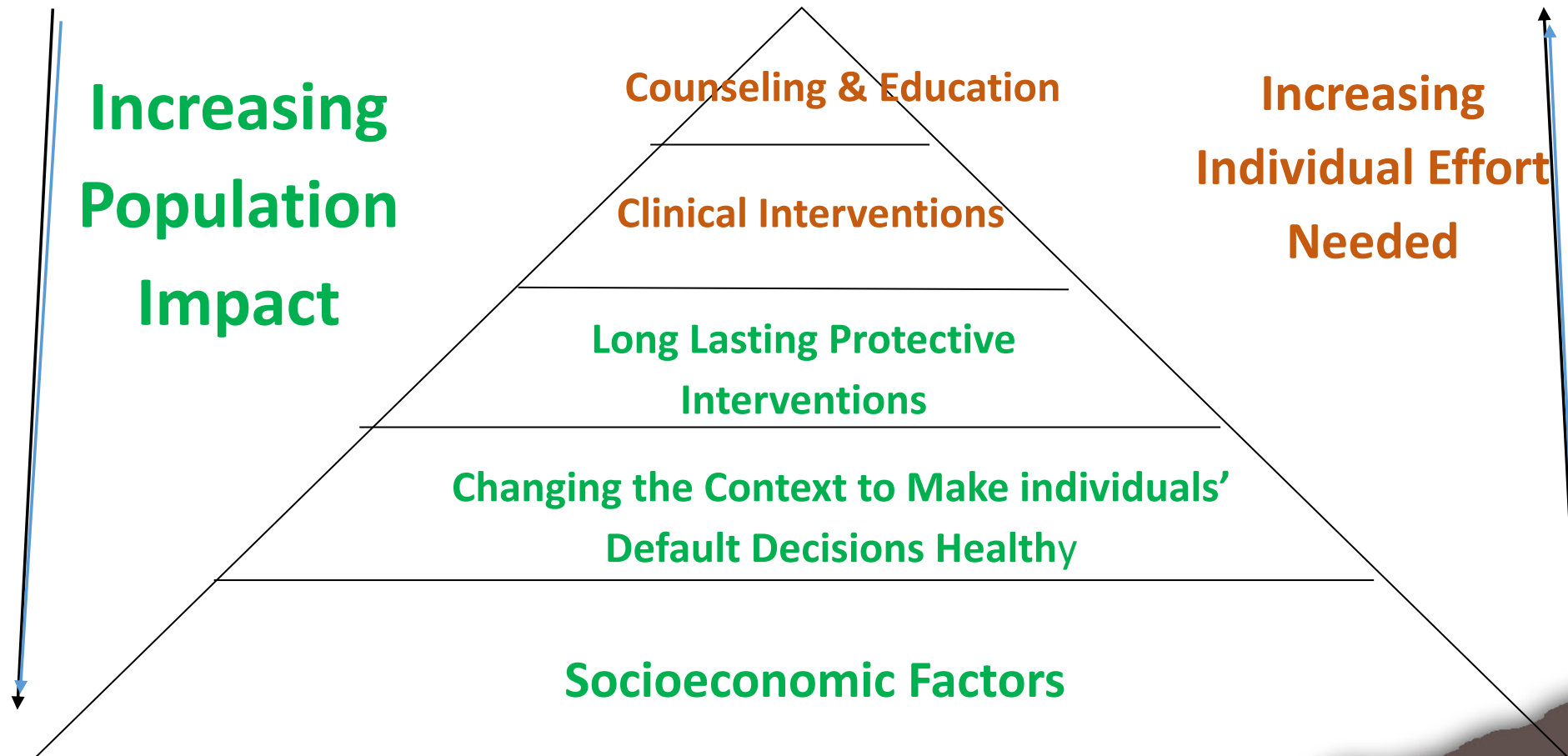
One of the core components is “**a shared family and community responsibility to protect children**”

Social-Ecological Framework

Source: Richmond-Crum, M., Joyner, C., Fogerty, S., Ellis, M. L. & Saul, J. (2013). Applying a Public Health Approach: The Role of the State Health Department in Preventing Severe Maltreatment and Fatalities of Young Children. *Child Welfare*, 92(2), 97–116. See page 104.



The Impact Health Pyramid



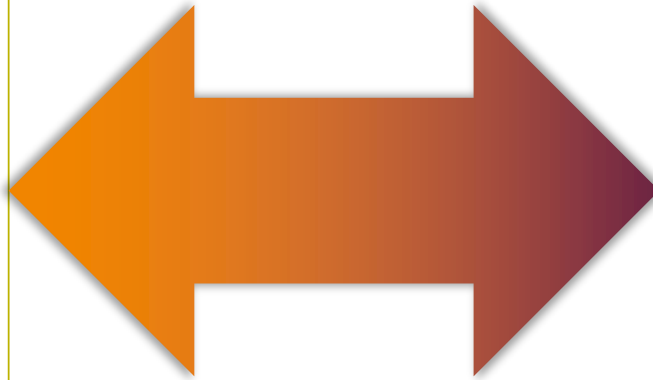
Source: modified Frieden, TR (2010). A framework for public health action: The impact health pyramid. *The American Journal of Public Health*, 100(4), 590-595.

When and how we intervene?

FEDERAL | STATE POLICIES | FUNDING STRUCTURE

Environmental Factors

- Before maltreatment occurs- Primary Prevention
- Universal
- Population level
- Build protective capacity/strength-based



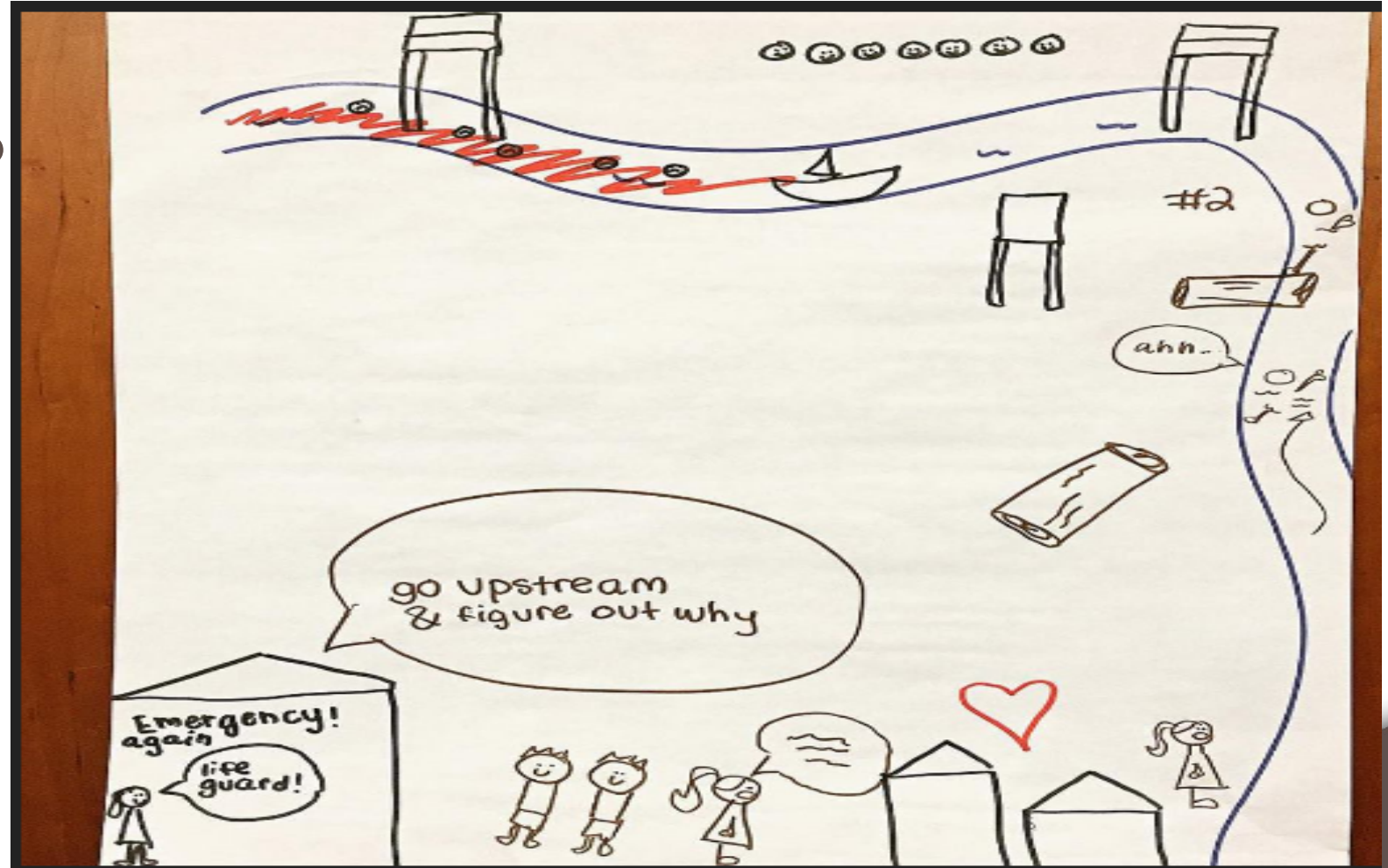
Individual Responsibility

- After maltreatment occurs- Investigation (findings)
- Categorical
- Individual problems
- Deficit oriented

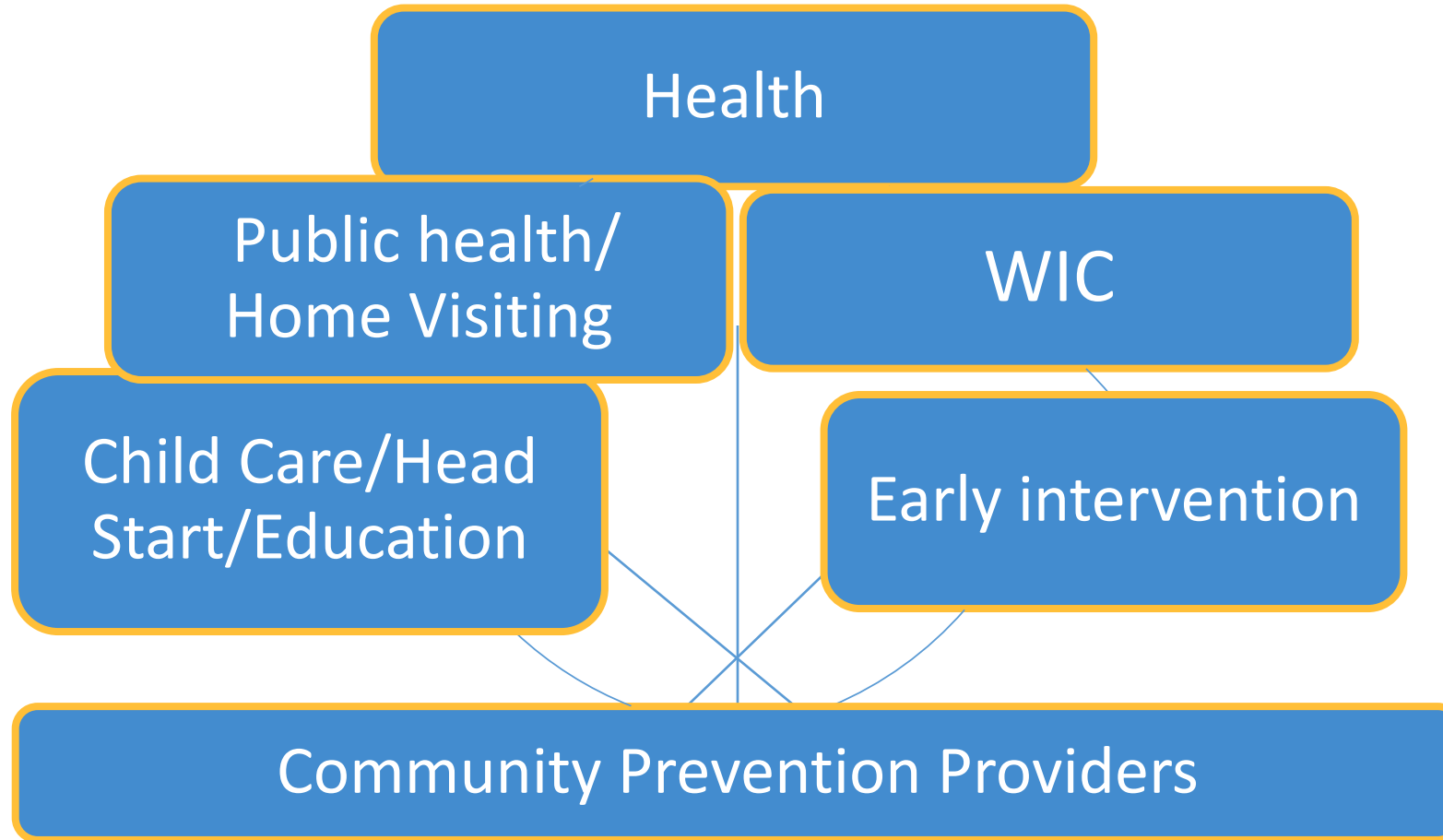
Go upstream and figure out why.

- Is it that simple?

Child Welfare
System's role
and
Child protection
Agency's role



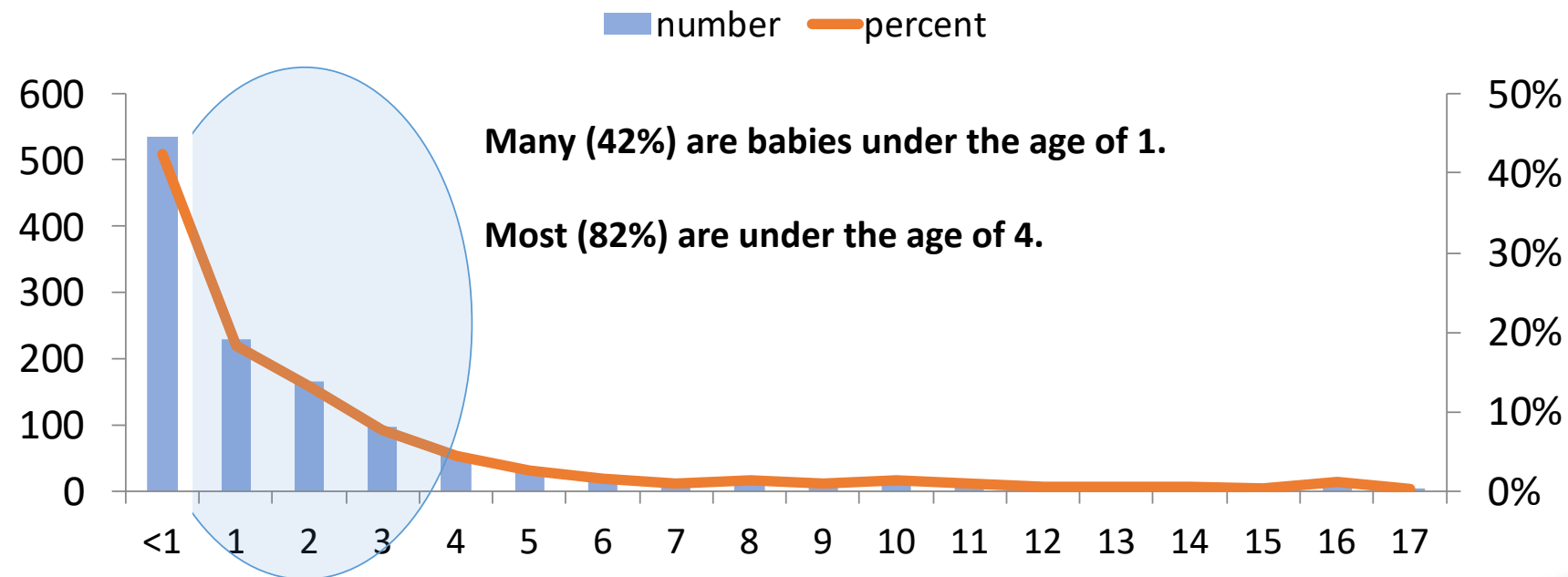
Who is upstream?



(Source: Rubin, D. Modified from the Presentation to the Casey Safety Forum, October 30, 2013. rubin@email.chop.edu)

Most maltreatment-related fatalities involve very young children

Maltreatment Related Child Fatalities, by Age



Children at increased risk: Using data and research

- Economic recession
- Foreclosure



- Prior report of maltreatment



- Sentinel injury: Minor injury can precede severe physical abuse in infants





Recent Headlines

- The Chronicle of Social Change | Washington (Jan 10, 2018)
[Washington State's New Child Welfare Boss Talks Prevention, Retention and Federal Funding](#)
Washington Gov. Jay Inslee (D) signed [a bill in July](#) to create a new cabinet-level agency to oversee the children's issues in the state based on the recommendations of the [Washington State Blue Ribbon Commission](#) on the Delivery of Services to Children and Families. The new Department of Children, Youth, and Families (DCYF) will include three agencies — the Department of Early Learning, the Children's Administration and Juvenile Rehabilitation — with the goal of changing how the state serves at-risk children and youth.


Recent Headlines

- Associated Press | Montana (Jan 12, 2018)
Montana launches new effort to reduce child abuse, deaths
Montana's health department on Friday announced a new effort aimed at reducing deaths due to child abuse and neglect. Sheila Hogan, director of the Department of Public Health and Human Services, is expanding a home visiting program for expectant mothers and young families with "home visitors" who will work exclusively with families involved in the child protection system. Of the 14 child deaths reported to the Child and Family Ombudsman between mid-December 2016 and mid-December 2017, 10 involved children under the age of 1, department officials said.





Public health campaigns

 **Connecticut Office of Early Childhood**
Sponsored ·   


Does your Baby sleep on his back, in his own crib, even for naps? Does he sleep without toys, blankets, bumpers or pillows?



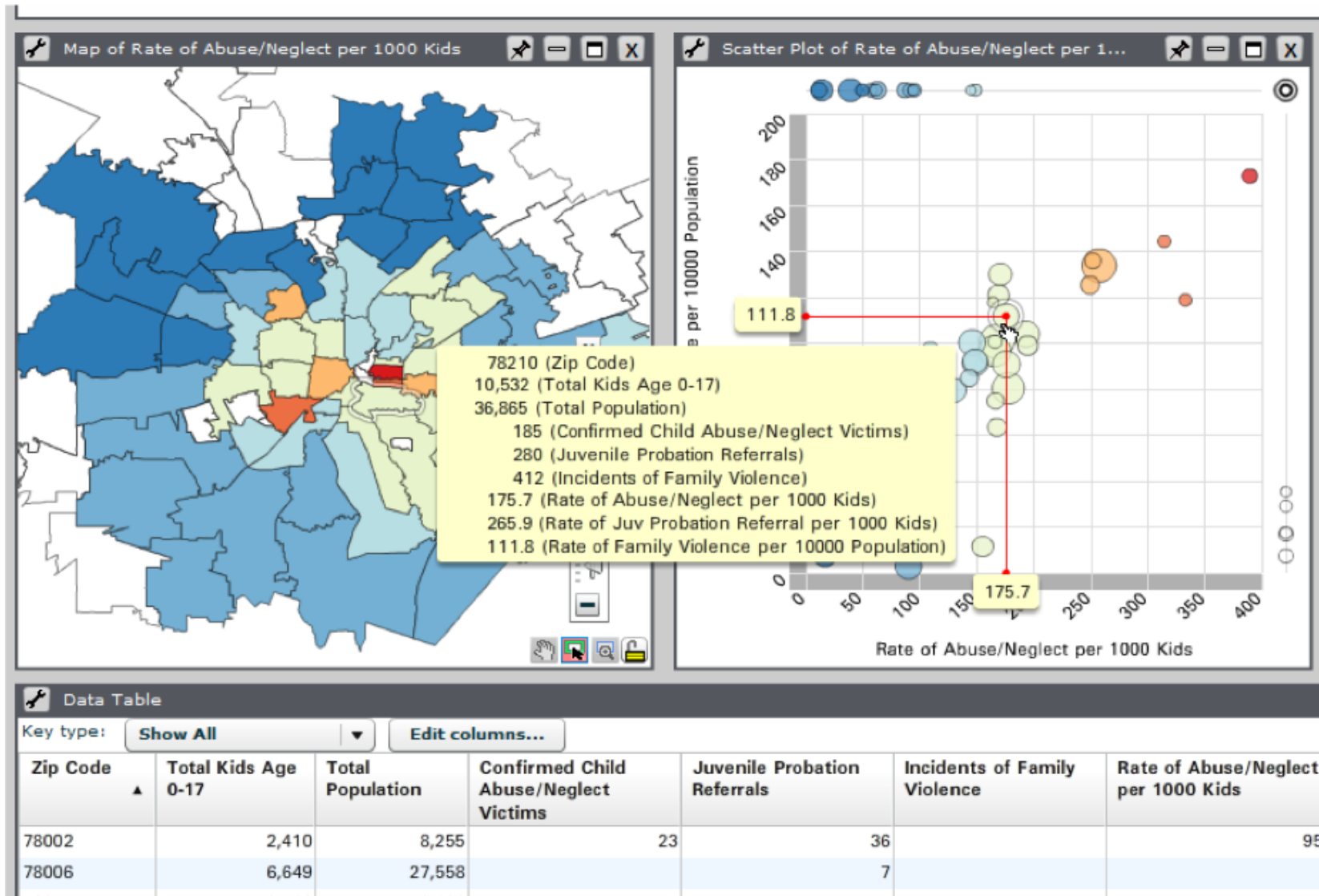
Make sure your Baby is a Safe Sleeper
<http://www.ctoec.org/safe-sleep> [Learn More](#)

 **Connecticut Office of Early Childhood**
Sponsored ·   

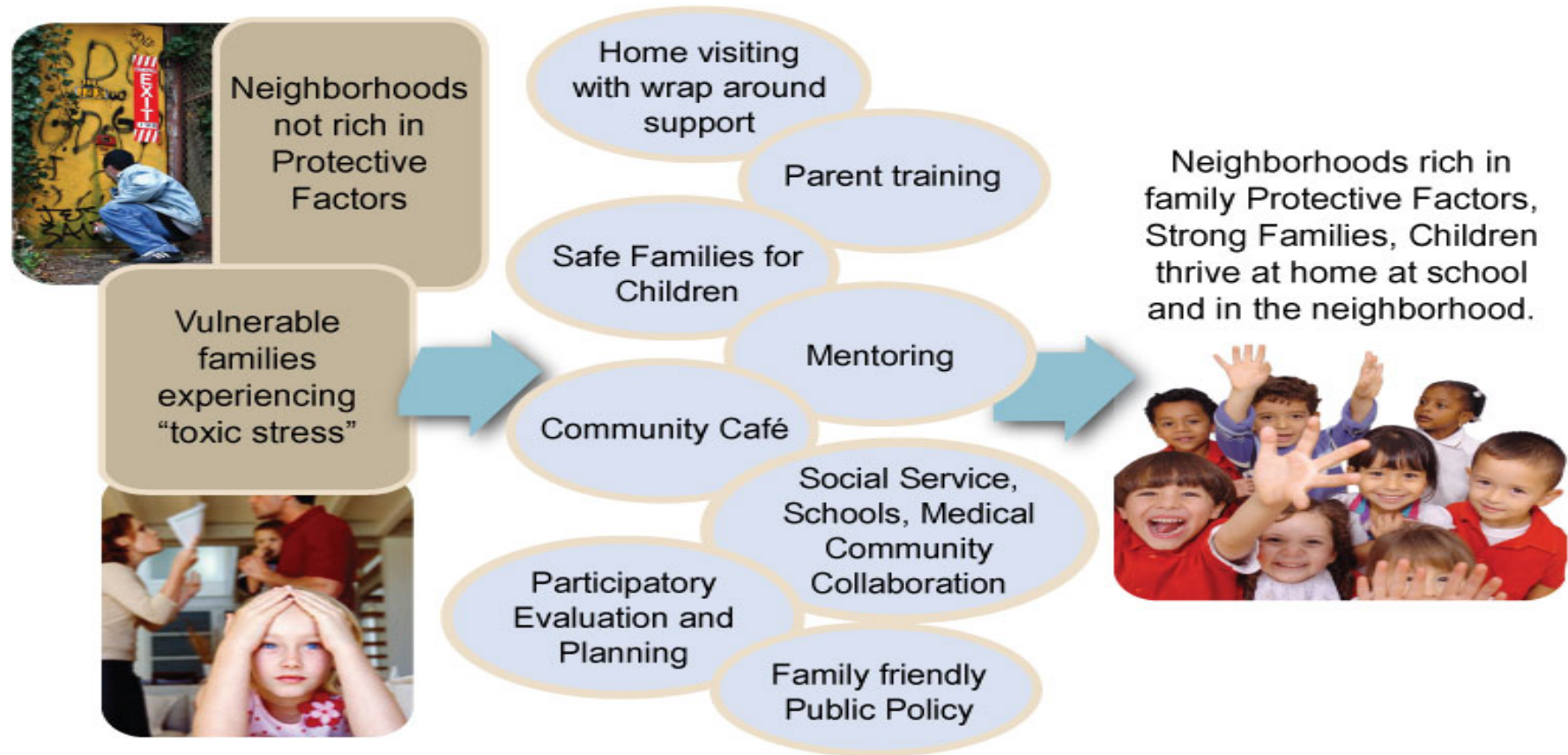
Breastfeeding is great for Baby. Mom should be sure to stay awake!



Make sure your Baby is a Safe Sleeper
<http://www.ctoec.org/safe-sleep> [Learn More](#)



Building protective factors for families in communities: Fostering Hope Initiative in Salem Oregon



Communities of hope: Hagerstown, Maryland



- How can a community challenged with high removal rates of children due to abuse or neglect become a Community of Hope? For the Bester community in Hagerstown, Maryland, the answer lies in overhauling its approach to strengthening families and keeping children safe.

Communities of hope: Johnson county, KY

Building a community of hope in Johnson County, Kentucky



- This communitywide partnership grew in an area struggling with unemployment and substance abuse. It brings together social services, the judicial system, community volunteers, mental health services, substance abuse services, public schools, the local library and the business community, all in support of building stronger families.

Questions/Discussion?

Zchahine@Casey.org